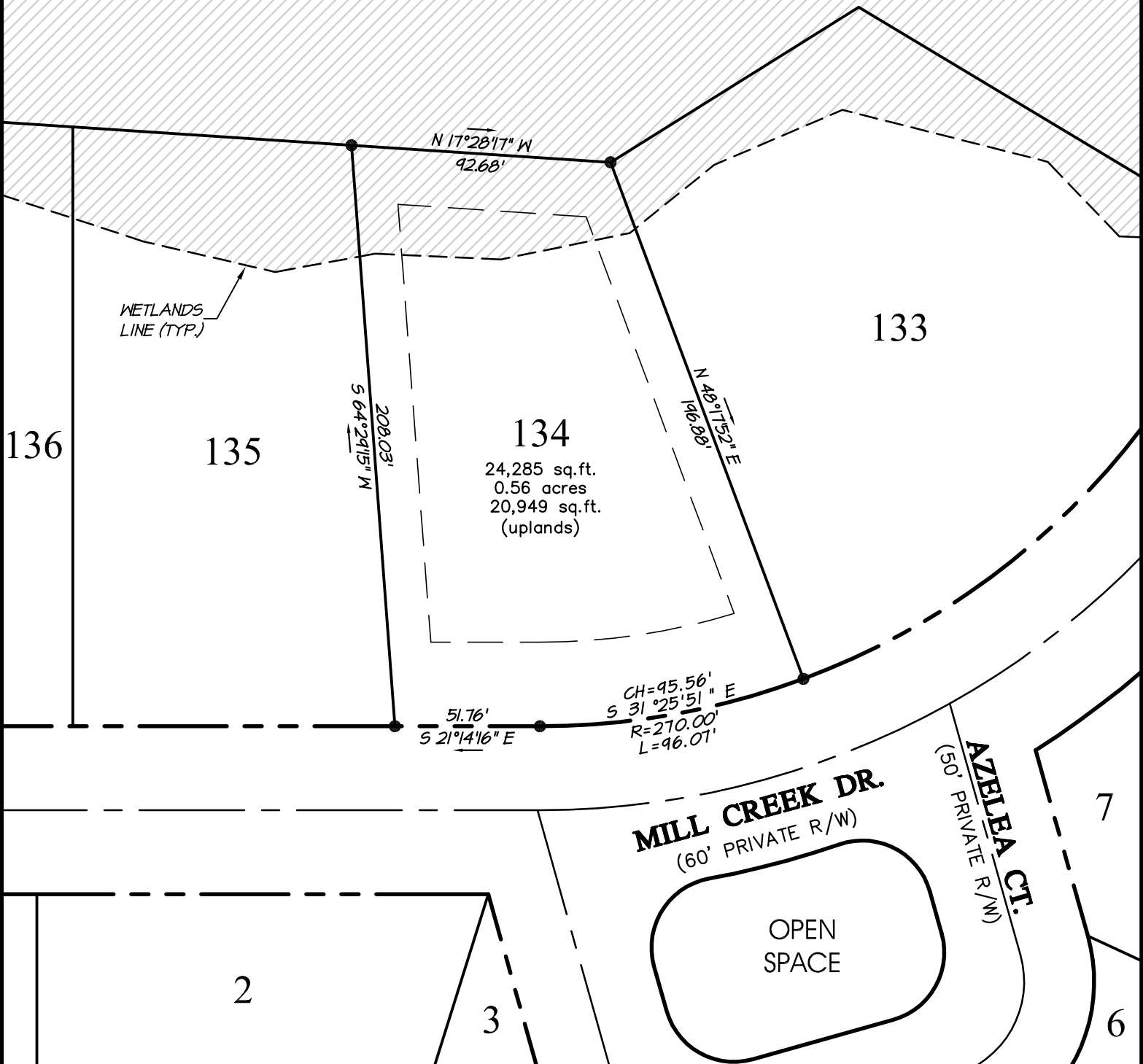


EXISTING  
WETLANDS

OPEN  
SPACE



SURVEYING PROVIDED BY:  
**HERBERT J. NOBLES, Jr.**  
 PROFESSIONAL LAND SURVEYOR  
 186 CAMPEN ROAD - BAYBORO, NORTH CAROLINA 28515 - (252)-745-5951

**LOT 134**  
**PHASE 1**

**Quible** SINCE 1959  
**& Associates, P.C.**  
 ENGINEERING \* CONSULTING \* PLANNING  
 ENVIRONMENTAL SCIENCES \* SURVEYING  
 Phone: (252) 261-3300  
 Fax: (252) 261-1260



Conceptual Master Plan Prepared By:  
**Atlantic International Design Studio**  
 Regional and International Land Planning Consultants  
 4 Dunmore Court - Suite 103 - Building A  
 Hilton Head Island, SC 29925 - Tel: 843.681.6654

MINNESOTT BEACH PAMLICO CO. NORTH CAROLINA



PO Box 1633  
 Newbern, NC 28569-1633  
 1-800-967-7639  
 www.arlingtonplace.com

