

OPEN SPACE

SAILMAKER LOOP
(50' PRIVATE R/W)

310

309

WETLANDS
LINE (TYP.)

EXISTING
WETLANDS

FIRM ZONE
"X"
SHADED

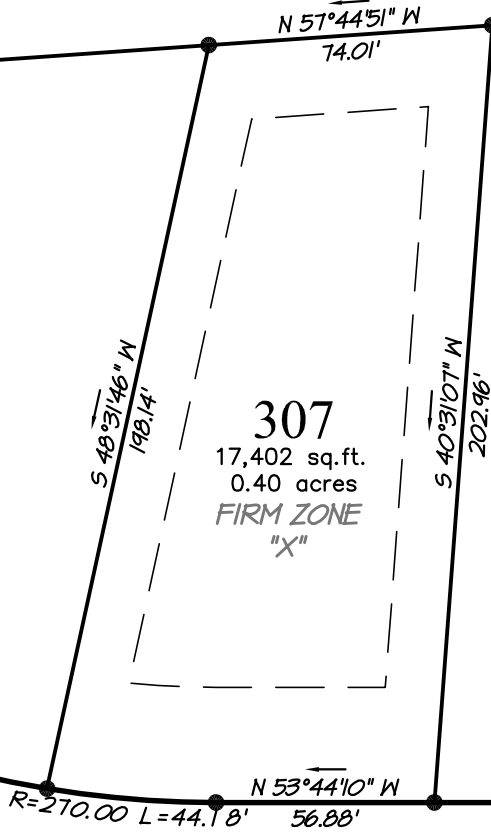
308

307

17,402 sq.ft.
0.40 acres
FIRM ZONE
"X"

306

305



W. BURTON FARM DR.
(60' PRIVATE R/W)

299

300

301

302

303

SURVEYING PROVIDED BY:
HERBERT J. NOBLES, Jr.
PROFESSIONAL LAND SURVEYOR

186 CAMPEN ROAD - BAYBORO, NORTH CAROLINA 28515 - (252)-745-5951

LOT 307
PHASE 2

MINNESOTT BEACH PAMLICO CO. NORTH CAROLINA



Conceptual Master Plan Prepared By:
**Atlantic International
Design Studio**

Regional and International Land Planning Consultants
4 Dunmore Court - Suite 103 - Building A
Hilton Head Island, SC 29925 - Tel: 843.681.6654



PO Box 1633
Newbern, NC 28569-1633
1-800-967-7639
www.arlingtonplace.com

Quible SINCE 1959

& Associates, P.C.

ENGINEERING * CONSULTING * PLANNING
ENVIRONMENTAL SCIENCES * SURVEYING
Phone: (252) 261-3300
Fax: (252) 261-1260

