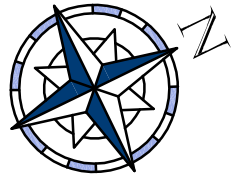


345

346

OPEN SPACE



EXISTING WETLANDS

WETLANDS LINE (TYP.)

364

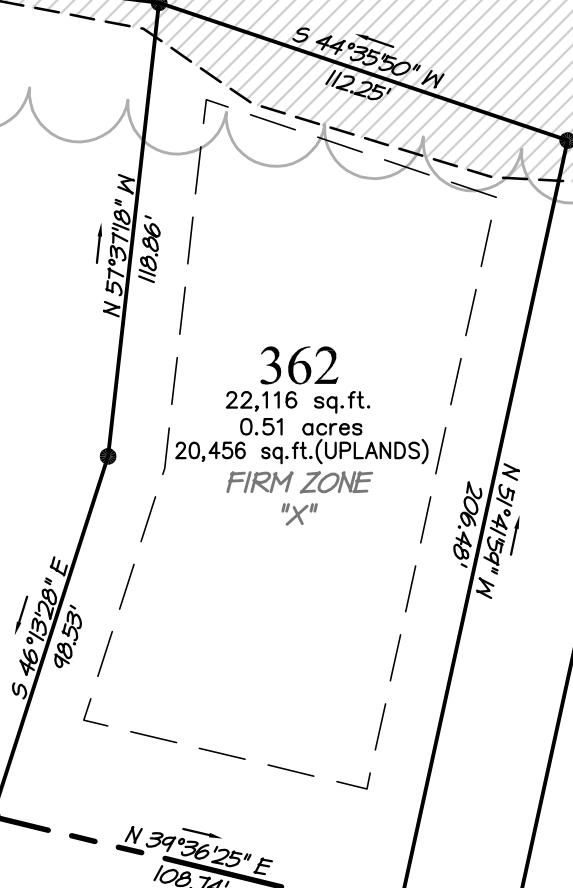
363

362

22,116 sq.ft.  
0.51 acres  
20,456 sq.ft.(UPLANDS)  
FIRM ZONE  
"X"

361

360



OPEN SPACE

**S. BRIGHTLEAF DR.**  
(50' PRIVATE R/W)

398

399

SURVEYING PROVIDED BY:  
**HERBERT J. NOBLES, Jr.**  
PROFESSIONAL LAND SURVEYOR

186 CAMPEN ROAD - BAYBORO, NORTH CAROLINA 28515 - (252)-745-5951

**LOT 362**  
**PHASE 2**

MINNESOTT BEACH PAMLICO CO. NORTH CAROLINA



Conceptual Master Plan Prepared By:  
**Atlantic International Design Studio**

Regional and International Land Planning Consultants  
4 Dunmore Court - Suite 103 - Building A  
Hilton Head Island, SC 29925 - Tel: 843.681.6654



PO Box 1633  
Newbern, NC 28569-1633  
1-800-967-7639  
www.arlingtonplace.com

**Quible** SINCE 1959

**& Associates, P.C.**

ENGINEERING \* CONSULTING \* PLANNING  
ENVIRONMENTAL SCIENCES \* SURVEYING  
Phone: (252) 261-3300  
Fax: (252) 261-1260

