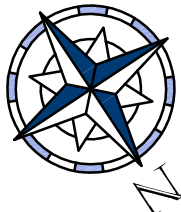
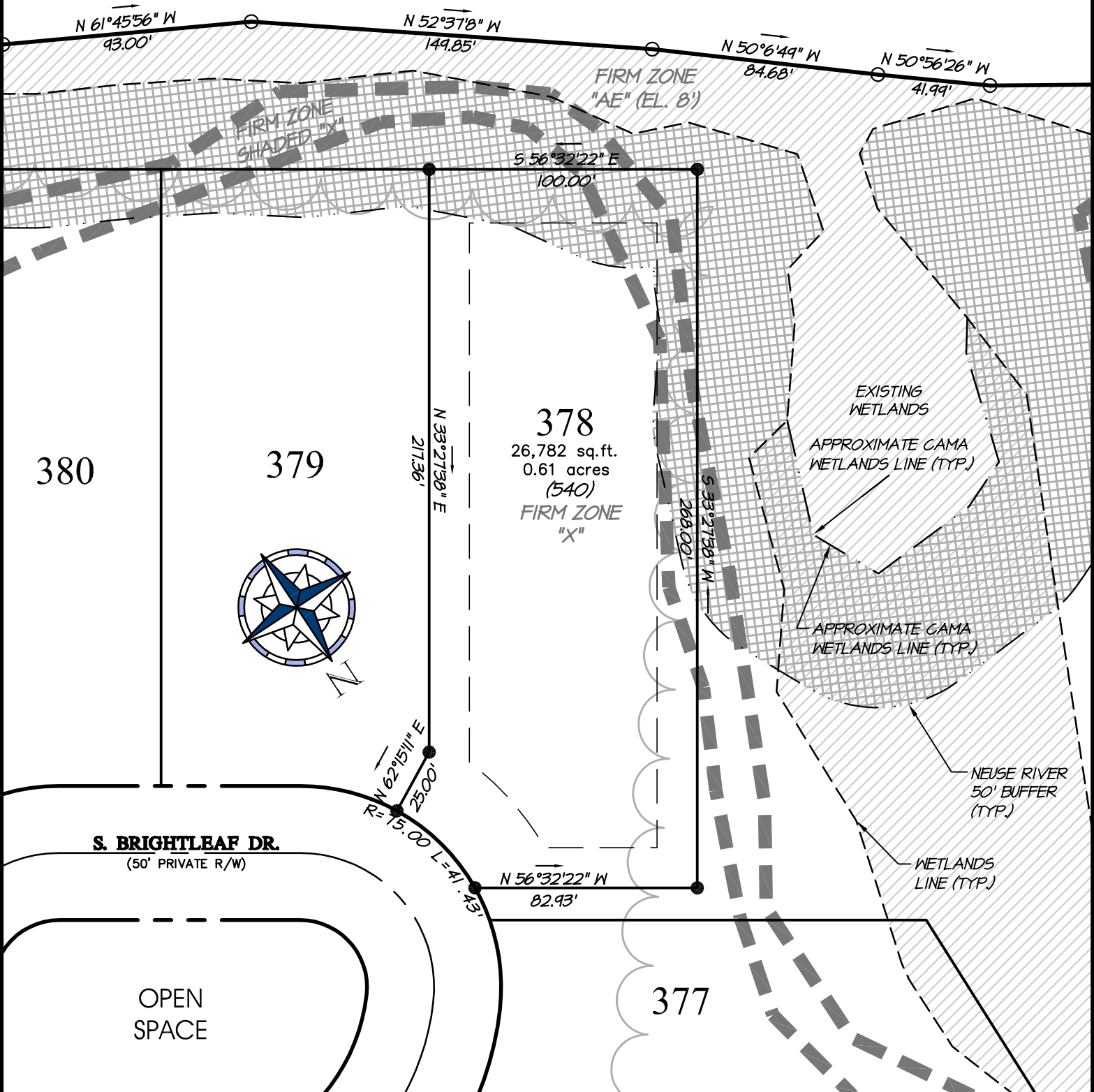


NEUSE RIVER



SURVEYING PROVIDED BY:
HERBERT J. NOBLES, Jr.
 PROFESSIONAL LAND SURVEYOR
 186 CAMPEN ROAD - BAYBORO, NORTH CAROLINA 28515 - (252)-745-5951


LOT 378
PHASE 2

Quible SINCE 1959
& Associates, P.C.
 ENGINEERING * CONSULTING * PLANNING
 ENVIRONMENTAL SCIENCES * SURVEYING
 Phone: (252) 261-3300
 Fax: (252) 261-1260

Conceptual Master Plan Prepared By:

Atlantic International Design Studio
 Regional and International Land Planning Consultants
 4 Dunmore Court - Suite 103 - Building A
 Hilton Head Island, SC 29925 - Tel: 843.681.6654

MINNESOTT BEACH PAMLICO CO. NORTH CAROLINA


 PO Box 1633
 Newbern, NC 28569-1633
 1-800-967-7639
 www.arlingtonplace.com

