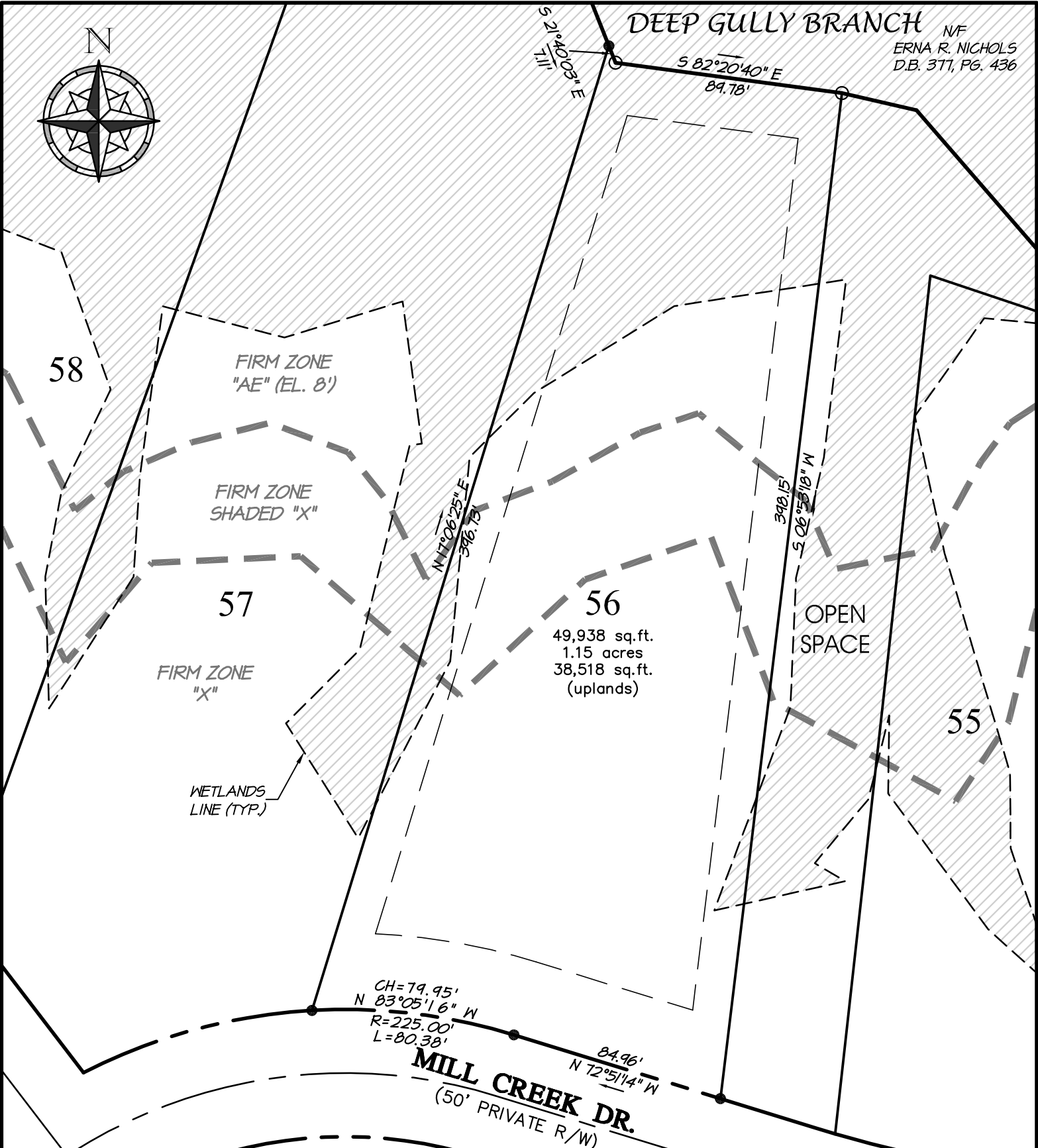


DEEP GULLY BRANCH N/F
 ERNA R. NICHOLS
 D.B. 377, PG. 436



58

FIRM ZONE
 "AE" (EL. 8')

FIRM ZONE
 SHADED "X"

57

FIRM ZONE
 "X"

WETLANDS
 LINE (TYP.)

56

49,938 sq.ft.
 1.15 acres
 38,518 sq.ft.
 (uplands)

OPEN
 SPACE

55

CH=79.95'
 N 83°05'16" W
 R=225.00'
 L=80.38'

MILL CREEK DR.
 (50' PRIVATE R/W)

84.96'
 N 72°51'14" W

SURVEYING PROVIDED BY:
HERBERT J. NOBLES, Jr.
 PROFESSIONAL LAND SURVEYOR
 186 CAMPEN ROAD - BAYBORO, NORTH CAROLINA 28515 - (252)-745-5951

LOT 56
PHASE 1

Quible SINCE 1959
& Associates, P.C.

Conceptual Master Plan Prepared By:

Atlantic International Design Studio
 Regional and International Land Planning Consultants
 4 Dunmore Court - Suite 103 - Building A
 Hilton Head Island, SC 29925 - Tel: 843.681.6654

MINNESOTT BEACH PAMLICO CO. NORTH CAROLINA

 PO Box 1633
 Newbern, NC 28569-1633
 1-800-967-7639
 www.arlingtonplace.com

ENGINEERING * CONSULTING * PLANNING
 ENVIRONMENTAL SCIENCES * SURVEYING
 Phone: (252) 261-3300
 Fax: (252) 261-1260

