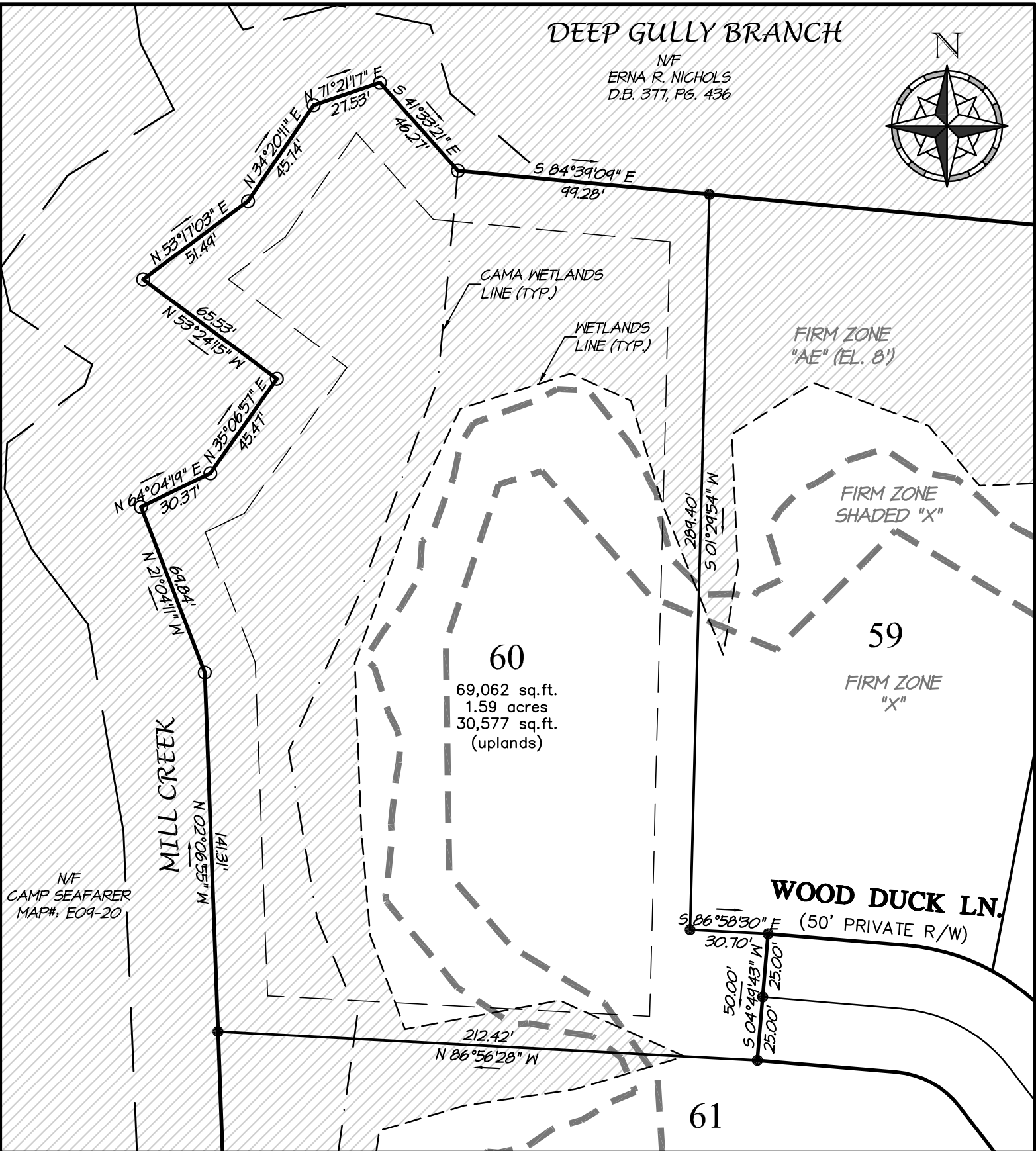
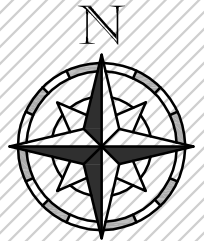


DEEP GULLY BRANCH

NF
ERNA R. NICHOLS
D.B. 377, PG. 436



SURVEYING PROVIDED BY:
HERBERT J. NOBLES, Jr.
PROFESSIONAL LAND SURVEYOR
186 CAMPEN ROAD - BAYBORO, NORTH CAROLINA 28515 - (252)-745-5951

LOT 60
PHASE 1

MINNESOTT BEACH PAMLICO CO. NORTH CAROLINA



Conceptual Master Plan Prepared By:
Atlantic International Design Studio

Regional and International Land Planning Consultants
4 Dunmore Court - Suite 103 - Building A
Hilton Head Island, SC 29925 - Tel: 843.681.6654



PO Box 1633
Newbern, NC 28569-1633
1-800-967-7639
www.arlingtonplace.com

Quible SINCE 1959

& Associates, P.C.

ENGINEERING * CONSULTING * PLANNING
ENVIRONMENTAL SCIENCES * SURVEYING
Phone: (252) 261-3300
Fax: (252) 261-1260

