

OPEN SPACE

EXISTING WETLANDS

FIRM ZONE "X"

FIRM ZONE SHADED X

WETLANDS LINE (TYP.)

84

83

82

81

30,085 sq.ft.  
0.69 acres

80

79

**WILLOW COVE LN.**

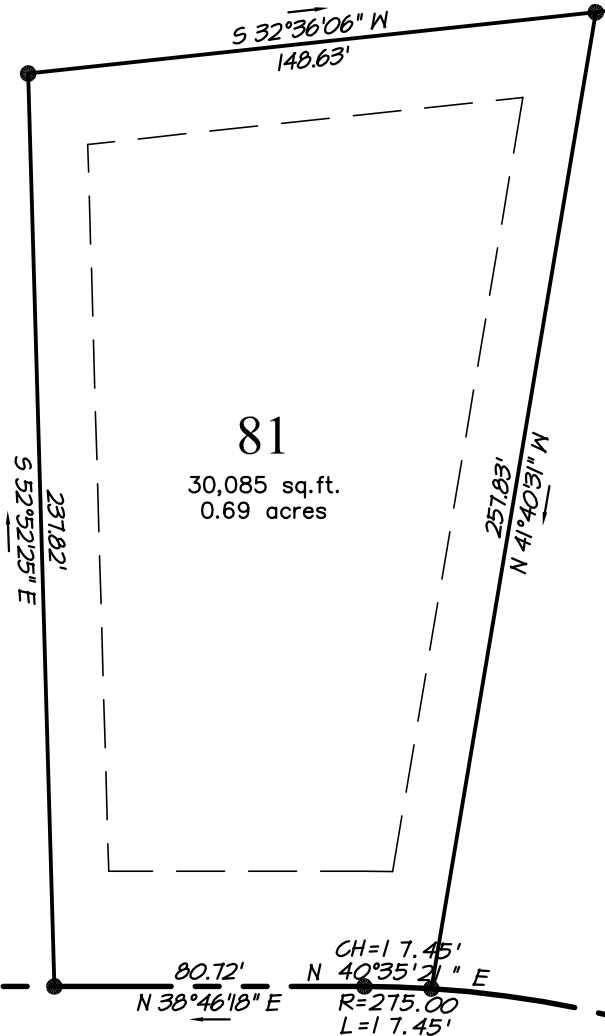
(50' PRIVATE R/W)

72

OPEN SPACE

73

74



SURVEYING PROVIDED BY:  
**HERBERT J. NOBLES, Jr.**  
PROFESSIONAL LAND SURVEYOR  
186 CAMPEN ROAD - BAYBORO, NORTH CAROLINA 28515 - (252)-745-5951

**LOT 81**  
**PHASE 1**

**Quible** SINCE 1959  
**& Associates, P.C.**

Conceptual Master Plan Prepared By:  
**Atlantic International Design Studio**  
Regional and International Land Planning Consultants  
4 Dunmore Court - Suite 103 - Building A  
Hilton Head Island, SC 29925 - Tel: 843.681.6654

MINNESOTT BEACH PAMLICO CO. NORTH CAROLINA  
  
PO Box 1633  
Newbern, NC 28569-1633  
1-800-967-7639  
www.arlingtonplace.com

ENGINEERING \* CONSULTING \* PLANNING  
ENVIRONMENTAL SCIENCES \* SURVEYING  
Phone: (252) 261-3300  
Fax: (252) 261-1260